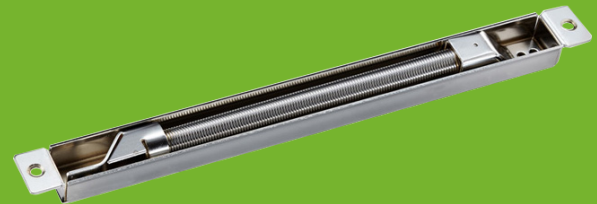


## Concealed Door Loop Electrical Power Transfer



DAL-37

### What is concealed door loop?

Concealed door loop, Whereas typical door loops are surface mounted and remain constantly visible, the Concealed Door Loop slides into the door and/or frame completely concealing itself when the door is closed. ... The Concealed Door Loops aesthetic appeal will benefit retrofits and new installations alike.

### Specifications

<b>S4A Model No.</b>	DAL-37	<b>Standard Structure</b>	Alloy Material, Thickened Ripple Tube
<b>Wire diameter</b>	10mm	<b>Finish For Shell</b>	Painted by high temperature
<b>Inner Diameter</b>	Support 2pcs 6mm cat6 wires	<b>Installation</b>	Mortise Mounting
<b>Dimension</b>	294x24x21mm	<b>Usage</b>	Prevent the wire from malicious damage

### Dimensions

