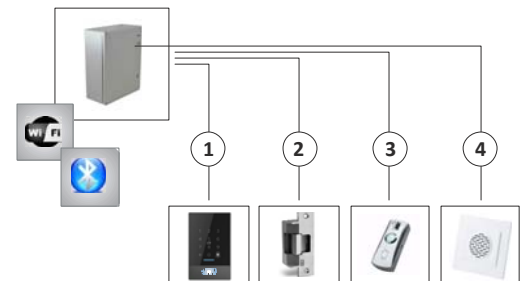
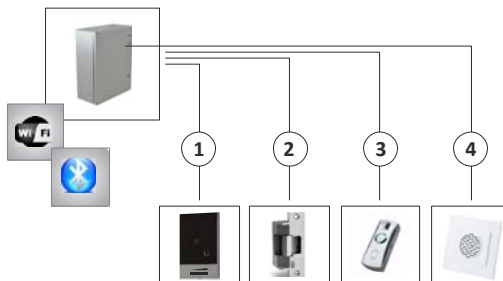




PROIZVOD: ČITAČ – WiFi; BLT; RFID; ŠIFRATOR-IP66

SISTEMI SA DELIMIČNIM OŽIČENJEM (SAMO U ZONI VRATA, VIDI PRIMER NIŽE)

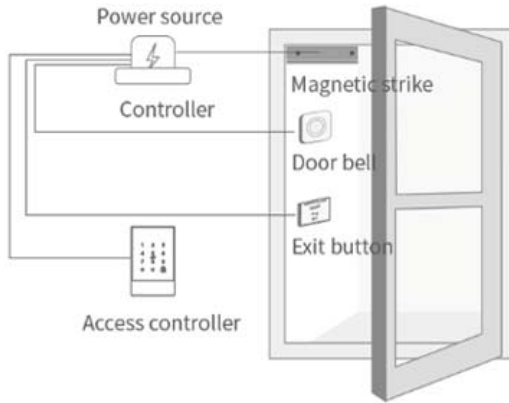


U ORIGINALU

Bluetooth Remote Control Access Control Reader YAFBA & YAFBA
 Bluetooth + card + password
 E-key capacity: unlimited;
 Card capacity: 20.000pcs
 IP66 waterproof; 12VDC; Stan-by current 5mA; Aluminum frame / Tempered glass panel
 Can replace old reader directly

FEATURES:

Unlock by mobile APP, password, WIFI(need gateway), Mifare card
 Read unlock record in real-time
 Support garbled input
 Delete authorization, set valid time, share e-key on APP directly
 Support IOS & ANDROID system
 Offer free SDK
 Connect electric lock directly available
 Support connect with UPS power
 One mobile to control different reader at the same time
 Bluetooth 4.0

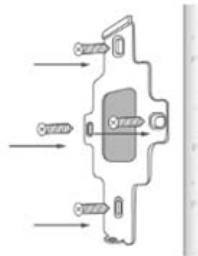


- 1 Drill a hole for the cable
- 2 Install the mounting plate

Drill a hole at appropriate position to make space for the cable to connect to the power source.

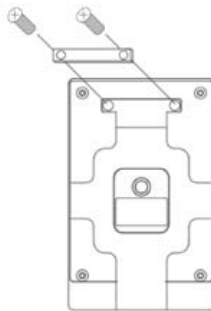


Fix the mounting plate with 4 screws.



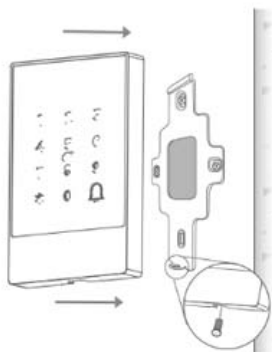
- 4 Install the hook

Fix the hook to the mounting plate with 2 screws.



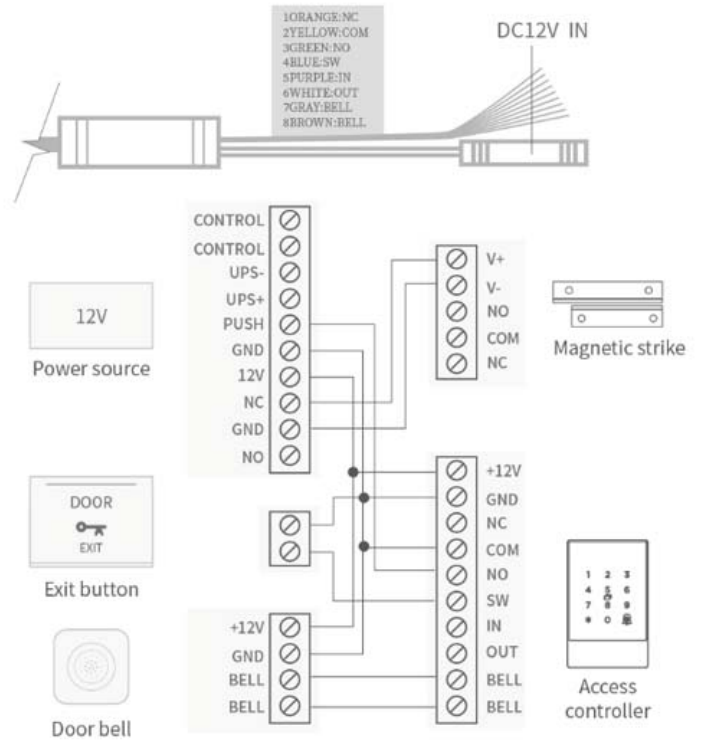
- 5 Install the access controller

Fit the access controller into the hook and fix it on the mounting plate with a screw in the bottom.



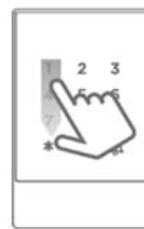
- 3 Wiring

Connect the cable of the access controller to power cable and other ports according to the illustration.

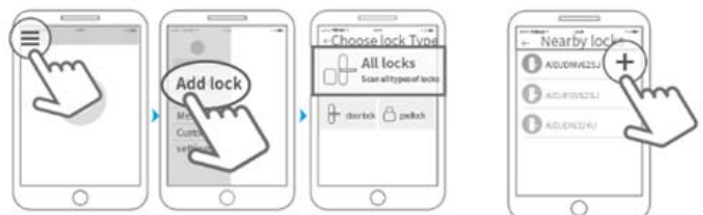


Pair the access controller with app

- 1 Tap the panel to light it up and activate the lock.
- 2 On voice prompt "Please add Bluetooth Administrator", activate the APP.

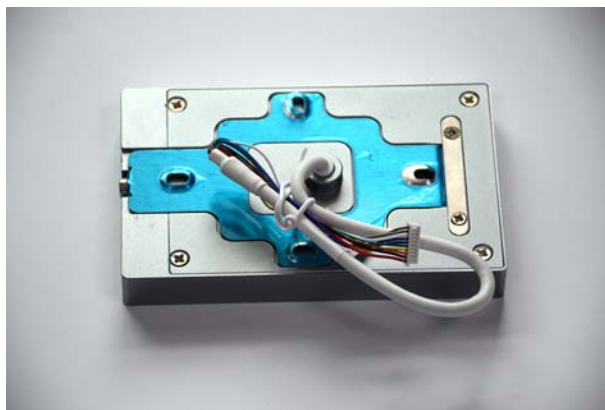


- 3 Tap the "☰" icon on the upper left corner, tap "+Add Lock", select "Door Lock".
- 4 Tap the device shown on the screen. Wait a few seconds till the lock gives a voice prompt/long beep, which means it is added successfully.

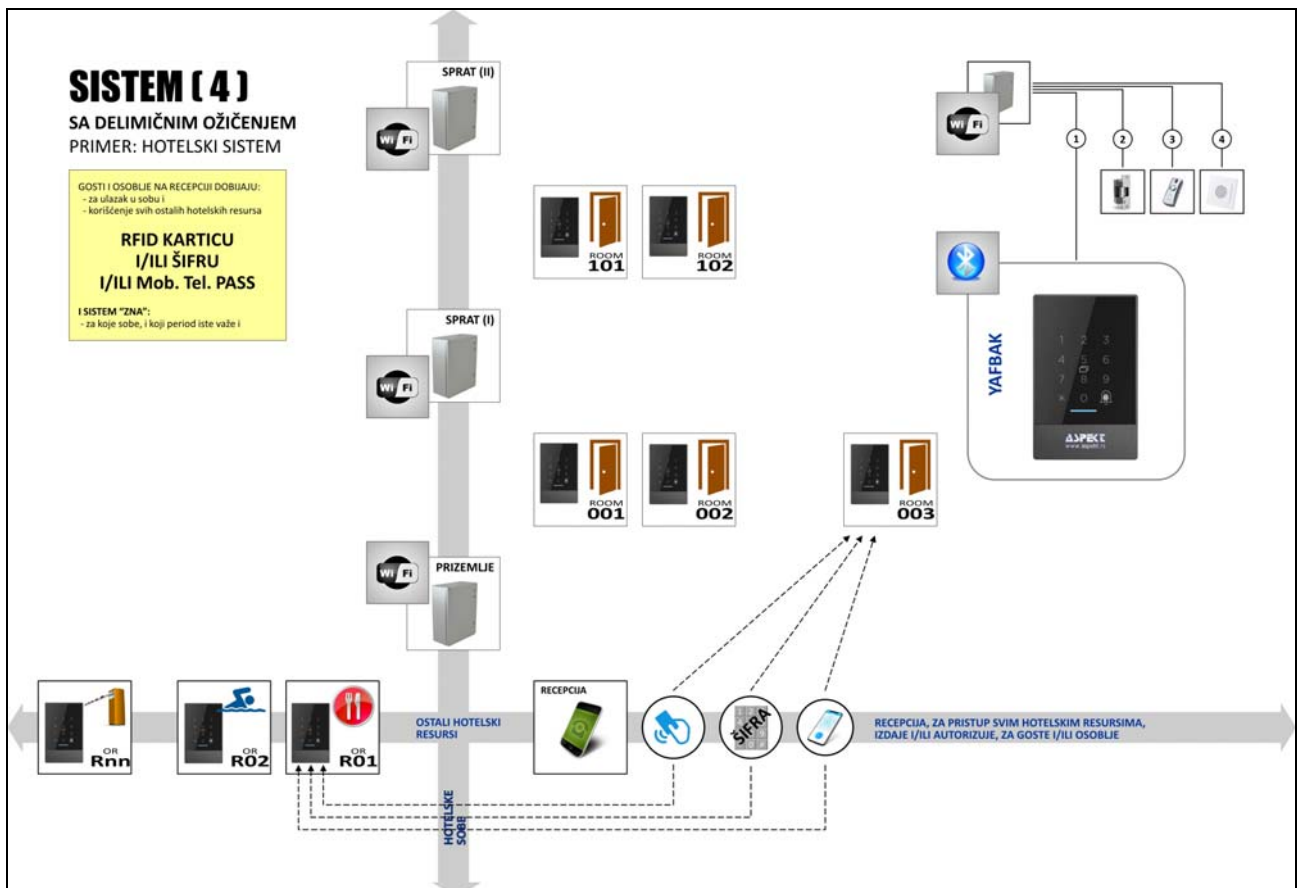


⚠ Notice: If fails, please shut off the APP and Bluetooth, turn them on and try the above process again.

SLIKE



GENERALNI KONCEPT REŠENJA, PRIMER: HOTELSKI SISTEM



TTLOCKAPP-MANAGER

App Manual -181022

TTLOCK App Manual

Scan to download the App

Please read the manual carefully before installation and keep this manual safe secure place.

Please refer to sales agents and professionals for information not included in this manual.

Introduction

The App is a smart lock management software includes door locks, parking locks, anti locks, bicycle locks, and more. The App connects with the lock via Bluetooth BLE, and can unlock, lock, firmware upgrade, read operation records, etc. The Bluetooth key can also open the door lock through the match. The app supports Chinese, Traditional Chinese, English, Spanish, Portuguese, Russian, French, and Malay.

contents

1. registration and login	5. card management
1.1 security question settings	6. fingerprint management
1.2 login authentication	7. bluetooth unlocking
1.3 way of identifying	8. attendance case management
2. lock management	9. system setting
2.1 lock adding	9.1 user management
2.2 lock upgrading	9.2 group management settings
2.3 error diagnosis and time calibration	9.3 timer admin rights
2.4 authorized administrator	9.4 region list
3. key management	9.5 customer service
3.1 key management	9.6 about
3.2 online working	10. gateway management
3.3 search lock record	10.1 gateway adding
3.4 password management	10.2 reset
4.1 permanent password	
4.2 time-limited password	
4.3 one-time password	
4.4 client code	
4.5 cyclic password	
4.6 camera lock password	
4.7 password sharing	
4.8 password management	

1. registration and login

Users can register the account by mobile phone and Email which is widely support 200+ countries and regions on the world. Verification code will be sent to user's mobile phone or email, and the registration will be successful after the verification.

1.1 security question settings

You will be taken to the security question settings page after registration is successful. When log in on a new device, the user can authenticate himself by answering the above questions.

1.2 login authentication

Log in with your mobile phone number or email account on the login page. The mobile phone number is automatically recognized by the system and does not input the country code. If you have forgotten your password, you can go to the password page to reset your password. After reset the password, you can receive a verification code from your mobile phone and email address.

1.3 way of identifying

There are two ways of security authentication. One is the way to get the verification code via the account number, and the other is the way to answer the question. If the current account is set the "answer the question" verification, then when the new device is logged in, there will be an "answer the question" verification option.

1.4 login successful

The first time you use the lock lock app, if there is no lock or key data in the account, the homepage will display the buttons to add the lock. If there is already a lock in the account, the lock information will be displayed.

2. lock management

The lock must be added on the app before it can be used. The addition of a lock needs to be finished on the lock by communicating with the lock via Bluetooth. Please read the lock. Once the lock is added successfully, you can manage the lock with the app including settings a key, setting a password, and so on.

2.1 lock adding

The App supports multiple types of lock, including door locks, padlocks, safe locks, smart lock cylinders, parking locks, and bicycle locks. When adding a device, you must first select the category. The lock needs to be added to the app after setting the setting mode. A lock that has not been added will enter the setting mode as long as the key has been touched. The lock that has been added needs to be selected on the App.

2.2 lock upgrading

User can upgrade the lock hardware on the APP. The upgrade needs to be done via Bluetooth next to the lock. When the upgrade is successful, the original key, password, IC card, setting permit can continue to be used.

2.3 error diagnosis and time calibration

Error diagnosis aims to help analyze the system problems. It needs to be done via Bluetooth beside the lock. If there is a gateway, the clock will be calibrated first through the gateway. If there is no gateway, the clock will be calibrated by the mobile phone Bluetooth.

2.4 authorized administrator

Only the administrator can operate the key. When the authorization is successful, the authorized key is consistent with the administrator's interface. He can add keys to others, send passwords, and more. However, the authorized administrator can no longer authorize others.

3. key management

The administrator can generate keys, set key type, and adjust the key, meanwhile he can search the lock record.

3.1 key management

The manager can divide key, read key, send and adjust the key, meanwhile he can search the lock record.

3.2 online working

The system has two control for online working, the gate more close to exploring and the not access to it has opened.

3.3 search lock record

The administrator can query the search record of each key.

TTLockAPP-USER

App Manual -161124 Software manual

TTLock App Manual

Scan the QR code on the left to download and install APP

Please read this manual carefully before installation, and save it properly.

Please consult the dealership store or the installer for installation and testing which are not recorded in the manual. If the problem cannot be solved, please call 0371-8952879, or 86-1531712356 for support.

Attention

Please turn on the phone's Bluetooth function before any operation.

Add a smart lock on your phone

The following operations need to be combined with the [Add & Remove Fingerprint, Password or Bluetooth Manager] section on the back of this manual and follow the instructions to add a smart lock on your phone.

When adding devices, operations must be completed near the lock.

Step 1: Click the "+" button Step 2: Select the lock type Step 3: Click the device name

In Step 3, there will be a "+" after the name of an add device, and the device cannot be added without a "+" sign. The interface will jump back to the key list interface after adding successfully. If the adding is unsuccessful, please repeat the above steps and view the device list in step 3.

Send a permanent eKey

Step 1: Click the device name Step 2: Click to send key Step 3: Follow the prompts

If you are not the administrator of the device, please contact the device administrator to add for the secondary authorization function of the device.

This feature requires the receiver to install the APP in the phone and have an account.

Send a timed eKey

In the authorized period of time, the receiver can unlock the lock regardless of times. Beyond the limitation of time, it will be invalidated automatically.

Send a timed password

Password is divided into four types: permanent, timed, cyclic and one-time. Please set its attribute accordingly.

Permanent password will not expire, but the administrator can delete them in the user list.

If the [Delete previous password] is checked, all password that have been used on the lock will be deleted with the new generated password is used for the first time.

The password needs to be used once within 24 hours after the start time, otherwise it will be invalid.

The cyclic password's cycle is a week and can be used cyclically for a defined period of time.

For example, if the time is valid when setting to 10:00 - 20:00 every weekend, the user can only open the door at the set time every weekend, and cannot open the door at other time.

The password needs to be used once within 24 hours after the start time, otherwise it will be invalid.

The one-time password is valid for 60 hours after the start time.

User management

In the list of eKey user management, click the user to perform the appropriate action:

[Modify Validity]: Click to modify the validity period of user's previous eKey. [Freeze]: The user key can be temporarily frozen so that it loses the unlocking function. The function is recovered after freezing is uncancel.

[Authorize]: Authorize the receiver to send an eKey or password to other users. In all of the above operations, the phones of two parties need to connect to the Internet. If the users cannot connect the network currently, the administrator's command will be postponed after the Internet is connected.

In the list of password user management, you can label the user. Click the user to perform the appropriate action:

[Rename]: The function can label the user and facilitate the management of passwords.

[Delete]: The function can delete the user directly (for 3rd-generation lock).

Unlocking records inquiry

Each time the ordinary user unlocks the lock with the eKey sent by the administrator, a record containing the user's nickname, eKey attributes and the unlocking time will automatically be generated and pushed to the administrator's APP.

Attention

If a lock has already been added by a phone, it cannot be added by a new phone unless:

- The previous administrator deletes it from his APP next to the lock.
- The reset button on the lock is pressed.

Deleting the password must be operated next to the lock.

Enter the software interface and click "+" button to add locks as the pop-up list suggests.

Key setting

Enter the device interface and click the "+" button to name the device and view the current administrator's password.

System Setting

User Name: Admin Password: 123456789

System Setting: Add Device, Account Management, About Us

Security Setting

Repeat Verification, Delete Admin eKey Verification, Send eKey Verification, Change Management Password Verification, Send Password Verification, AutoStart Verification

Account Management

Click on the option to pop out the picture uploading feature and set the image, display your account, mailbox and other information. To modify the password, verification of original password is needed.