

## Technical specifications:

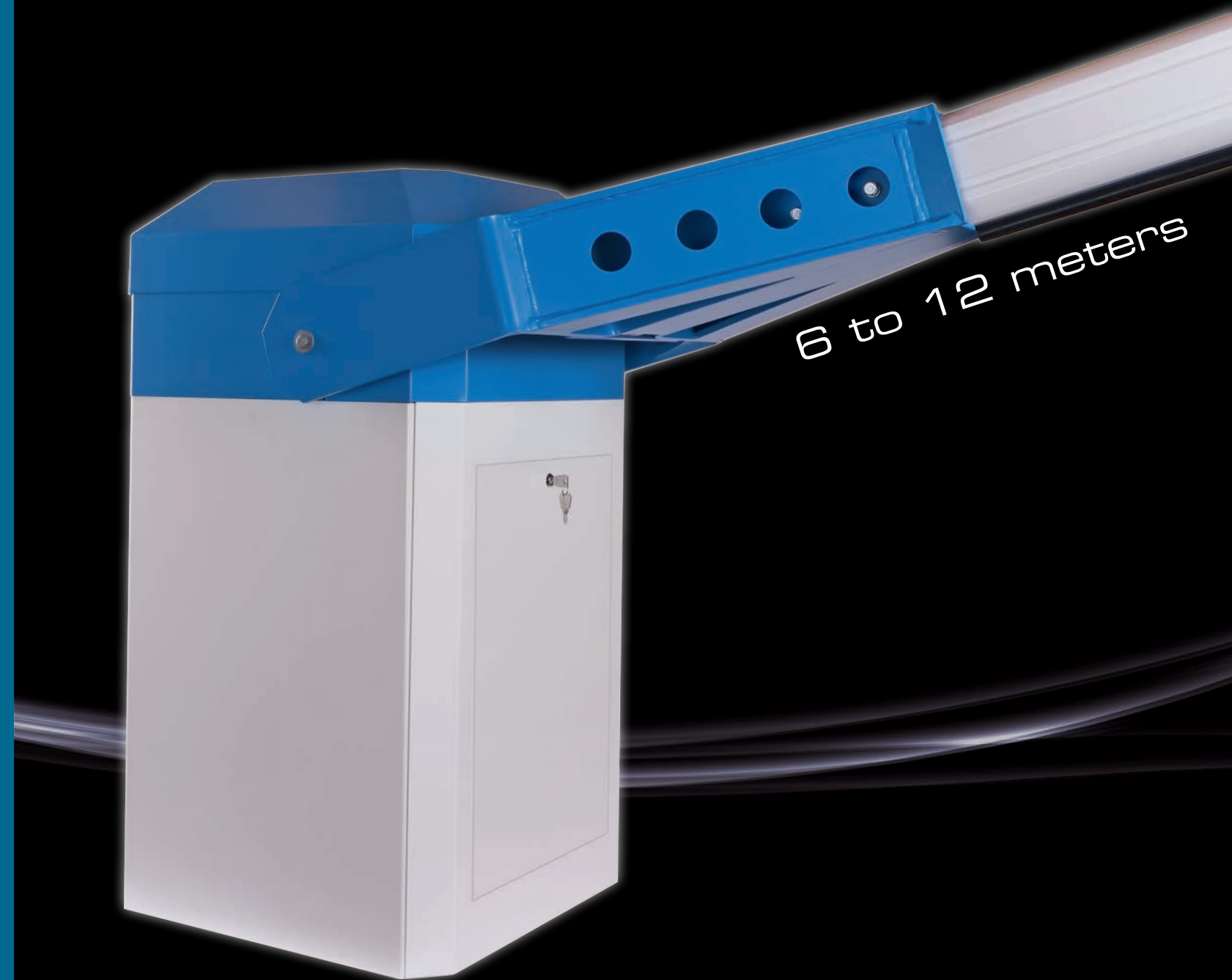
Type	KOLOSS 60	KOLOSS 90	KOLOSS 120
Barrier controller	MO 64		
Boom length / effective boom length (mm)	6,000	9,000	12,000
LED boom lighting with toggle switch (optional)	green = boom is open, red = boom is closed or in movement or constant red		
Silhouette light mounted on top of the barrier boom	red		
Folding skirt 75 (optional)	Yes	Yes	Up to max. 10,000mm
Folding skirt 150 (optional) Folding top and bottom skirt 150 (optional)	Up to max. 6,000mm		
Running time approx. (s)	6.0	9.0	12.0
Duty cycle	100%		
Housing w/l/h (mm)	720 x 656 x 1,250		
Boom connector	Middle, left / right connectable		
Boom dimensions h/w (mm)	170 x 140		
Round boom	no		
Temperature range	-20°C bis +50°C		
Mains supply	230V / 50Hz		
Drawn power max. (w)	550	550	1,100
Barrier weight approx. (kg)	425	450	475
Boom weight approx. (kg)	27	58	71.5
Reversing on obstacle	selectable		
Swinging or fixed support	optional	mandatory	mandatory
Standard colours	Hood RAL 5012 (blue), bottom part RAL 9010 (white) – custom colours optional		

We reserve the right to make technical alterations

Your partner for distribution – installation – service:

# ELKA barriers

## Series KOLOSS



# 12m-barrier Series KOLOSS

Barrier boom 170 x 140mm

## Intelligent barrier controller

- » Three integrated loop detectors
- » Modules remote control and TCP/IP (optional)
- » 6 freely programmable multi-functional relays
- » Input for constant open / constant closed
- » 12 and 24 Vdc, stabilized 500mA together 700mA for periphery equipment
- » One-button operation, three-button operation or dead man's mode
- » Photo-cell connection with testing function



## More than 400kg quality

- » Rugged housing frame made of galvanized steel profiles
- » Aluminum housing, powder-coated
- » Spring assembly up to 35 springs for a perfect weight counterbalance and 100,000 cycles
- » Robust mechanism made of galvanized steel

